

# Company Profile

Environmental Solutions.

Recycling Coorporate  
Trading (Pty) Ltd.

Address: Cnr Newton Street & Desi Street  
Industria, Middelburg, 1050, Mpumalanga

Phone: +27 (83) 354-4277

Email: [philip@re-co.co.za](mailto:philip@re-co.co.za)



**WE ARE PASSIONATE ABOUT  
SAVING THE ENVIROMENT.**

# CONTENTS

<u>The Company</u>	01
<u>Our Core Values</u>	03
<u>Vision &amp; Mission</u>	04
<u>About Us</u>	05
<u>Our History</u>	05
<u>Our Services</u>	06
<u>Community Support</u>	07
<u>Our Resources</u>	09
<u>Our Work</u>	13

# OUR CORE VALUES

The background of the entire page is a photograph of a white truck with a green and black 'R-Green' logo on its side. The truck is parked on a dirt surface, and a blue sky is visible in the upper portion of the image. The text 'OUR CORE VALUES' is at the top, and five dark grey rectangular boxes are overlaid on the image, each containing one of the core values.

**ACT WITH INTEGRITY**

**INSPIRE INNOVATION**

**EXCEED EXPECTATIONS**

**SUCCEED TOGETHER**



## OUR VISION

To be the preferred service provider in total waste management in the industrial and mining sector in South Africa..

## OUR MISSION

To provide a world class total waste management solution through increasing the percentage of recycled waste and reducing the disposed waste to a bare minimum and in turn contributing towards a cleaner environment. To insure that we stay true to our mission, we offer innovative recycling possibilities coupled with productive logistical capabilities.

# ABOUT THE RE-CO.

SINCE RECO ENVIRONMENTAL SOLUTIONS  
WAS FOUNDED, WE HAVE ALWAYS  
THRIVED FOR INNOVATION, EXCELLENCE,  
INCLUSIVITY AND DIVERSITY.

## ABOUT US

---

Re-Co Innovative recycling was established in 2018 with a hand selected employee team. Bosting with more than 100 years combined experience in the Recycling industry.

We are a Level 1 BBBEE company and service the Mpumalanga area with growth potential into the rest of South Africa.

## WHERE IT ALL STARTED

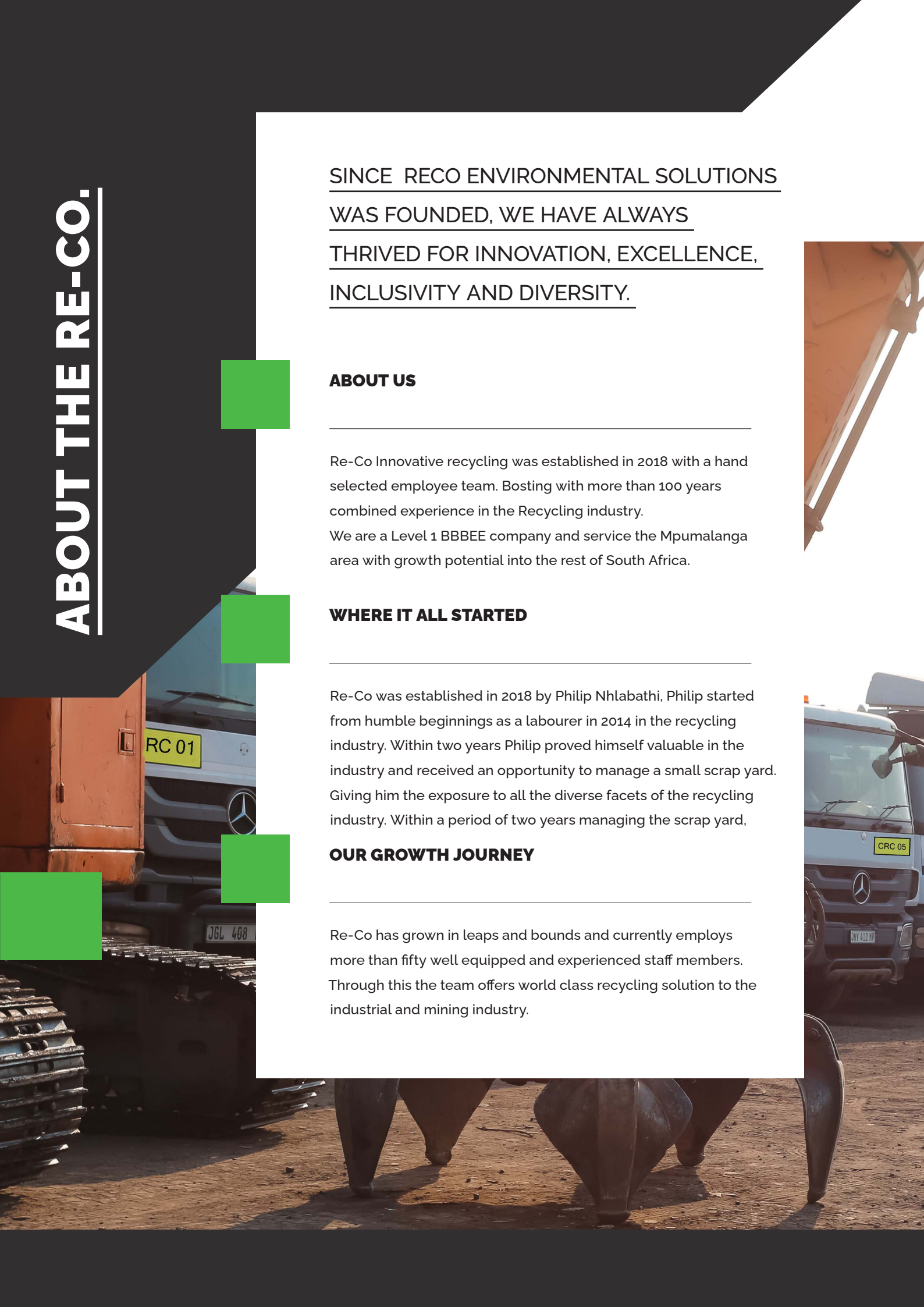
---

Re-Co was established in 2018 by Philip Nhlabathi, Philip started from humble beginnings as a labourer in 2014 in the recycling industry. Within two years Philip proved himself valuable in the industry and received an opportunity to manage a small scrap yard. Giving him the exposure to all the diverse facets of the recycling industry. Within a period of two years managing the scrap yard,

## OUR GROWTH JOURNEY

---

Re-Co has grown in leaps and bounds and currently employs more than fifty well equipped and experienced staff members. Through this the team offers world class recycling solution to the industrial and mining industry.





## OUR SERVICES

### LET'S LOOK AT DATA FROM THE SOUTH AFRICAN WASTE INFORMATION CENTRE.

According to (SAWIC), South African Waste Information Centre, in the year 2021 South Africa produced 60 million tons of waste from all nine provinces. 40 million of which was hazardous like asbestos containing waste, Chemical waste, Infectious waste and sharps, Pathological waste, Solid, Liquid and sludge inorganic waste. 30 million tons was just general waste like

plastic Commercial and industrial waste, construction and demolition waste, metals, glass, sewage sludge, paper, Municipal waste, Wood waste, Garden Waste, Municipal Waste. Given all this information we asked ourselves one question, what can we do to ensure that South African communities are safe. This is why we offer the following services.



#### **ONSITE WASTE MANAGEMENT**

Onsite waste management  
assessment and  
management plan  
development.



#### **ONSITE DEMOLITION**

Onsite demolition,  
processing, loading and  
transportation of scrap and or  
waste.



#### **WASTE IDENTIFICATION**

Identifying waste generating  
point and placement of  
waste receptacles (bins,  
drums or wheeled bins)



**WE ARE PASSIONATE ABOUT  
SOLVING ENVIROMENTAL  
PROBLEMS**



## **MONITORING BINS**

Monitoring Bins and waste  
generating points and ar-  
ranging of collection off all  
bin-able recyclable com-  
modities and other recy-  
clable and non-recyclable  
waste streams.



## **GRAP TRUCK- CRANE LOADING**

Grab Truck loading of  
scrap metal generated  
on the premises.  
Crane Loading of redundant  
equipment and removal from  
premises by lowbed.



## **SCRAP METAL PROCESSING**

Processing of scrap metal  
and conveyor belting into  
loadable sizes to ensure safe  
and effective removal.



## OUR INVOLVEMENT IN THE COMMUNITY YOUTH

Re-Co believes that South African Youth plays an important role in building stable and safe communities. This is why we take it upon ourselves to support various initiatives in the communities that we operate in. We also acknowledge that the youth have lots of energy and enthusiasm that needs to be

driven and focused in the right direction. This way young people avoid getting involved in crime and substance abuse, thus contributing to sustainable economic conditions for our country. This is why we sponsor a local team with sporting gears to encourage sporting activities.



### Our Youth & Future

Re-Co believes that South African Youth plays a significant role to both present and future of our country. This is why we are invested in the our youth.



# OUR RESOURCES

WE HAVE EQUIPPED OURSELVES WITH  
ENOUGH RESOURCES AND TEAM  
MEMBERS TO ENSURE THAT WE DELIVER  
QUALITY SERVICE TO OUR CLIENTS



## Grab Trucks

We have five grab trucks that are part of our assets.



## Bin & Trailer Truck

We have two bin trucks and two trailer combinations .



## Low Bed & LDVs

We have ten LDVs and one 40 Ton Low bed.

# OUR RESOURCES



**WE HAVE FIVE GRAB TRUCKS & ONE LOW BED TRUCK & TRAILER BELONGING TO RE-CO.**



# OUR STAFF

WE ALWAYS ENSURE THAT WE  
HAVE SUFFICIENT QUALIFIED  
HUMAN RESOURCE TO HANDLE  
THE WORK LOAD.







**WE ALSO HAVE TEN LDVS**



# OUR WORK

WE PRIDE OURSELVES WITH THE  
QUALITY OF WORK THAT WE DO  
FOR OUR CLIENTS.







**WE PERFORM EXCELLENT SCRAP METAL PROCESSING**





# Re-Co

Environmental Solutions.

## RE-CO ENVIRONMENTAL SOLUTIONS

---

**Address:** Cnr Newton Street &  
Desi Street Industria,  
Middelburg, 1050, Mpumalanga.

**Phone:** + 27 82 805 8623

**Email:** phillip@re-co.co.za

Designed by  
Uungu Technologies  
[www.uungu.co.za](http://www.uungu.co.za)